



Skatinger

Weihai Skatinger Outdoor Co., Ltd.

 <https://www.skatinger.cn>

 https://www.instagram.com/skatinger_paddleboard/

 <https://www.facebook.com/SkatingerSup/>

 https://www.youtube.com/channel/UCqIPQZLZAPSiS_5odwb-c1A

Ph: (+86 631) 5977990

Fax: (+86 631) 5988990

8F, No.666Keji Road, Hi-Tech Development Zone, Weihai, 264200, Shangdong, China



CUSTOMER
SERVICES



AFTER MARKET
SERVICE



MASS

Inflatable Water Sports Products

ABOUT SKATINGER

Weihai Skatinger Outdoor Products Co., Ltd. is a manufacturing and trading company with years of OEM & ODM experience in inflatable water sports products. Our factory is located in Zaozhuang City, Shandong Province, China, covering an area of about 6,000 square meters and employing hundreds of experienced staff.

Our goal is to provide a broader range of products to meet the requirements of any customer. Advanced production line, professional R&D, strict QC team, and management system to ensure the quality of our products. Factory's unique UV digital printer can meet the various needs of customers for customized patterns. Our advantage is that there is no MOQ requirement and a small quantity of OEM customization is acceptable.

All products are designed and tested according to SGS, CE, BSCI, GS, and other standards and have been exported to many countries and regions all over the world. So far, Skatinger has been recognized and welcomed by customers worldwide.

Whether you are already in or planning to start a SUP business, we will be happy to support you . Please do not hesitate to contact us for more information.



WHY CHOOSE US



SUP Advanced Customisation support

The factory's own UV printer can perfectly realise various colours and design solutions for customers. Custom MOQ from 20 pieces.



Quality Control

Every production step of each SUP is strictly inspected and final inspection before delivery. A two-year warranty is also provided.



Guaranteed delivery time

Fast shipping, spot 24 hours to send out, according to customer needs to choose the appropriate mode of transportation



0 Complaints

There are professionals strictly test in each link of production, follow up the entire production process of each SUP to ensure the quality.

Catalog



SUP

Best selling
11'6" x 35"

1-8
Prana

9-10
Sky blue

11-14
Asiaticus

15-18
Sports

19-22
SeaRider

10'6" x 32"

23-26
Voyager

27-30
Simple Blue

11' x 33"

31-34
Plan S

35-38
Cruiser

39-42
Summer

43-46
Aurora

47-50
Dream Journey

51-54
Sunrise and Sunset

11' x 34"

75-78
Octopus

79-82
Crazy Tribe

11'6" x 32"

55-58
Witch

59-62
Graffiti

63-66
Chance

67-70
Tiger and Bear

71-74
Interstellar

12'6" x 30"

83-86
Cmyk

14' x 27"

87-90
Milano

i-Rocker/ Kayak

91-94
i-Rocker

95-98
kAYAK

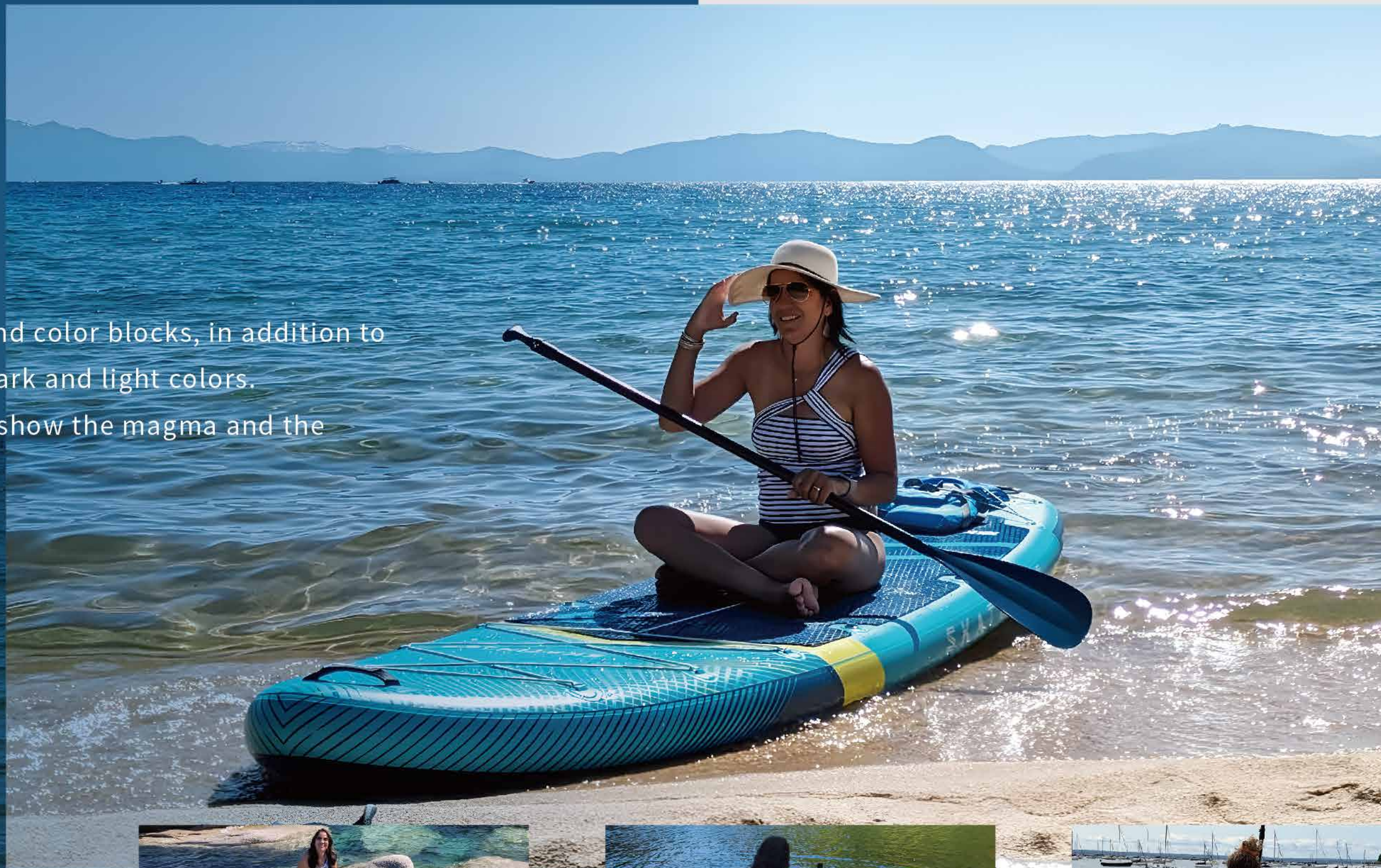
Product Accessories

99-100
Optional Accessories

101-102
Electric Fins

Prana

In the form of lines and color blocks, in addition to the combination of dark and light colors. The irregular shapes show the magma and the meteor showers



SK9001

LIGHT BLUE

11'6" x 35" x 6"

LENGTH	11'6"
WIDTH	35"
THICKNESS	6"
MODEL	Yoga
CONSTRUCTION	Single-layer
NET WEIGHT	9.8 KG
REC USER WEIGHT	Up to 195 KG
VOLUME	430 L
RECOMMENDED PSI	12-15 PSI

Backpack /
Double Action Hand Pump /
Fins system /
Leash /
Repair Kit /
Shoulder strap /
Phone Waterproof Bag /
Waterproof bag /
User manual /
Alu paddle /

ACCESSORIES

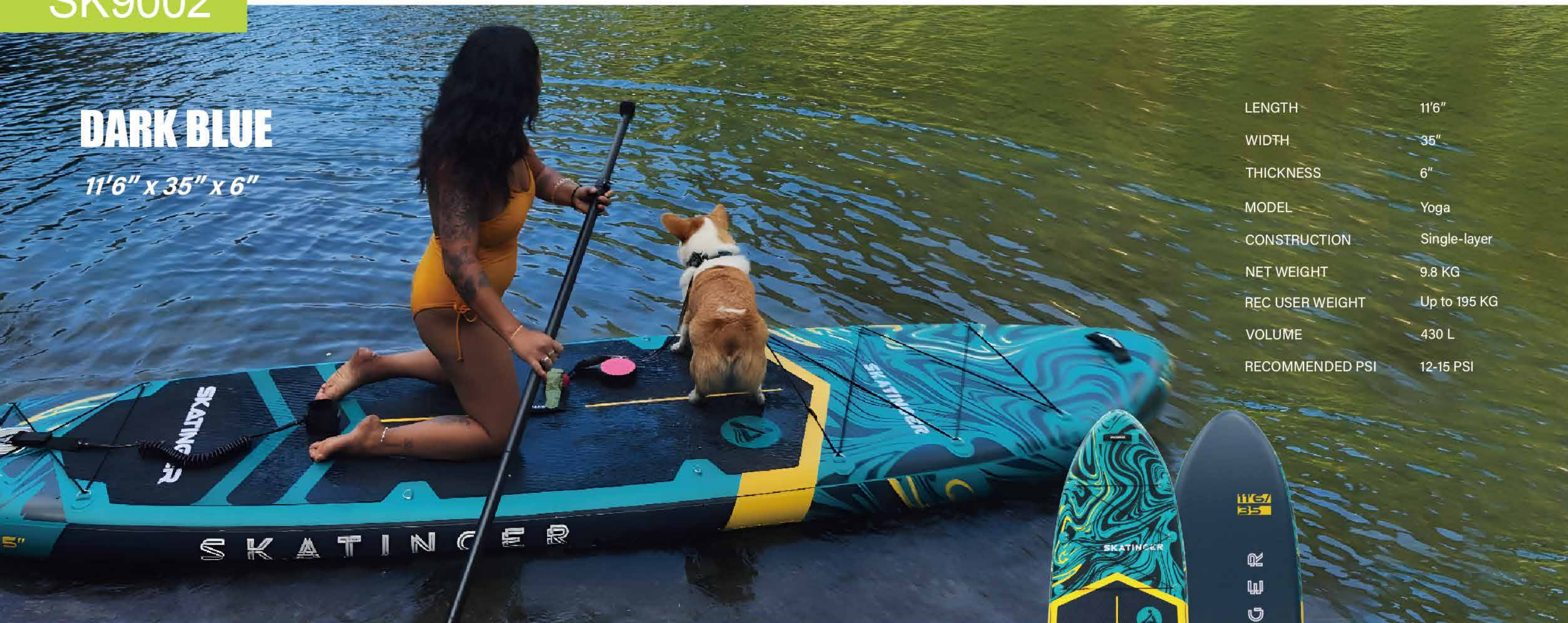


SK9002

DARK BLUE

11'6" x 35" x 6"

LENGTH	11'6"
WIDTH	35"
THICKNESS	6"
MODEL	Yoga
CONSTRUCTION	Single-layer
NET WEIGHT	9.8 KG
REC USER WEIGHT	Up to 195 KG
VOLUME	430 L
RECOMMENDED PSI	12-15 PSI



Backpack /
Double Action Hand Pump /
Fins system /
Leash /
Repair Kit /
Shoulder strap /
Phone Waterproof Bag /
Waterproof bag /
User manual /
Alu paddle /

ACCESSORIES



SK9003

PRANA RED

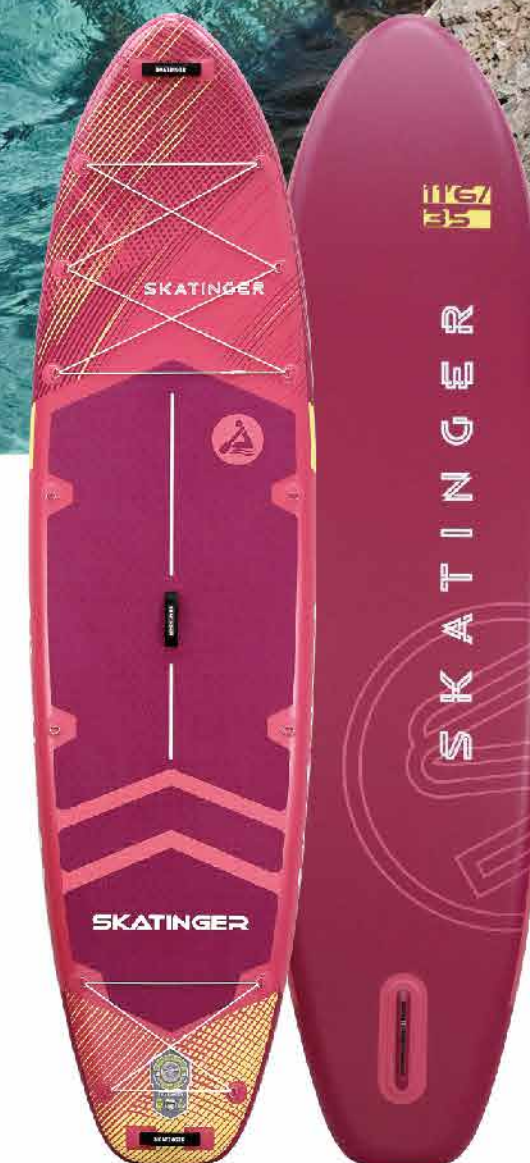
11'6" x 35" x 6"

LENGTH	11'6"
WIDTH	35"
THICKNESS	6"
MODEL	Yoga
CONSTRUCTION	Single-layer
NET WEIGHT	9.8 KG
REC USER WEIGHT	Up to 195 KG
VOLUME	430 L
RECOMMENDED PSI	12-15 PSI



Backpack /
Double Action Hand Pump /
Fins system /
Leash /
Repair Kit /
Shoulder strap /
Phone Waterproof Bag /
Waterproof bag /
User manual /
Alu paddle /

ACCESSORIES



DZ109

Sky blue

11'6" x 35" x 6"

LENGTH	11'6"
WIDTH	35"
THICKNESS	6"
MODEL	Yoga
CONSTRUCTION	Single-layer
NET WEIGHT	9.8 KG
REC USER WEIGHT	Up to 195 KG
VOLUME	430 L
RECOMMENDED PSI	12-15 PSI



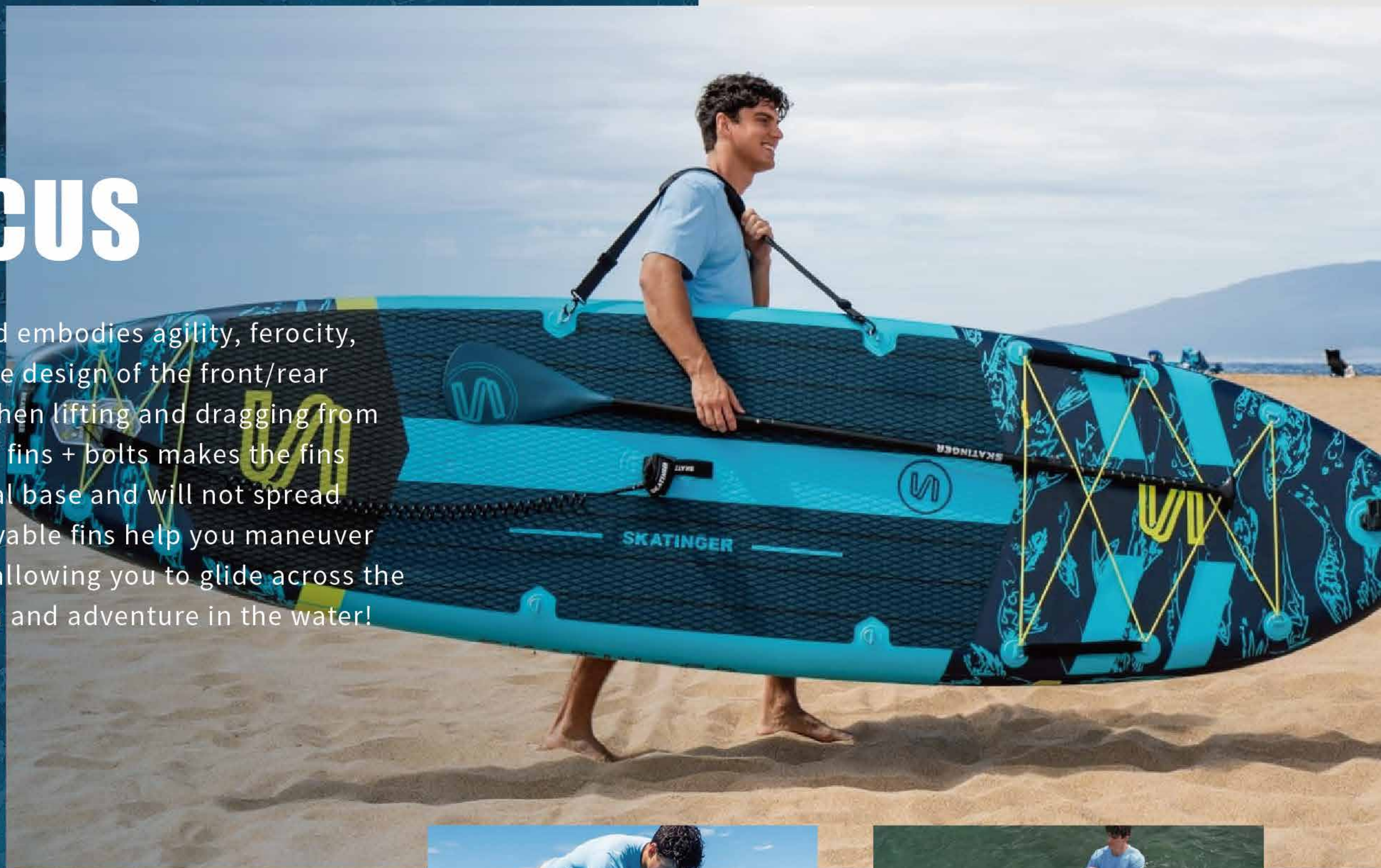
Backpack /
Double Action Hand Pump /
Fins system /
Leash /
Repair Kit /
Shoulder strap /
Phone Waterproof Bag /
Waterproof bag /
User manual /
Alu paddle /

ACCESSORIES



ASIATICUS

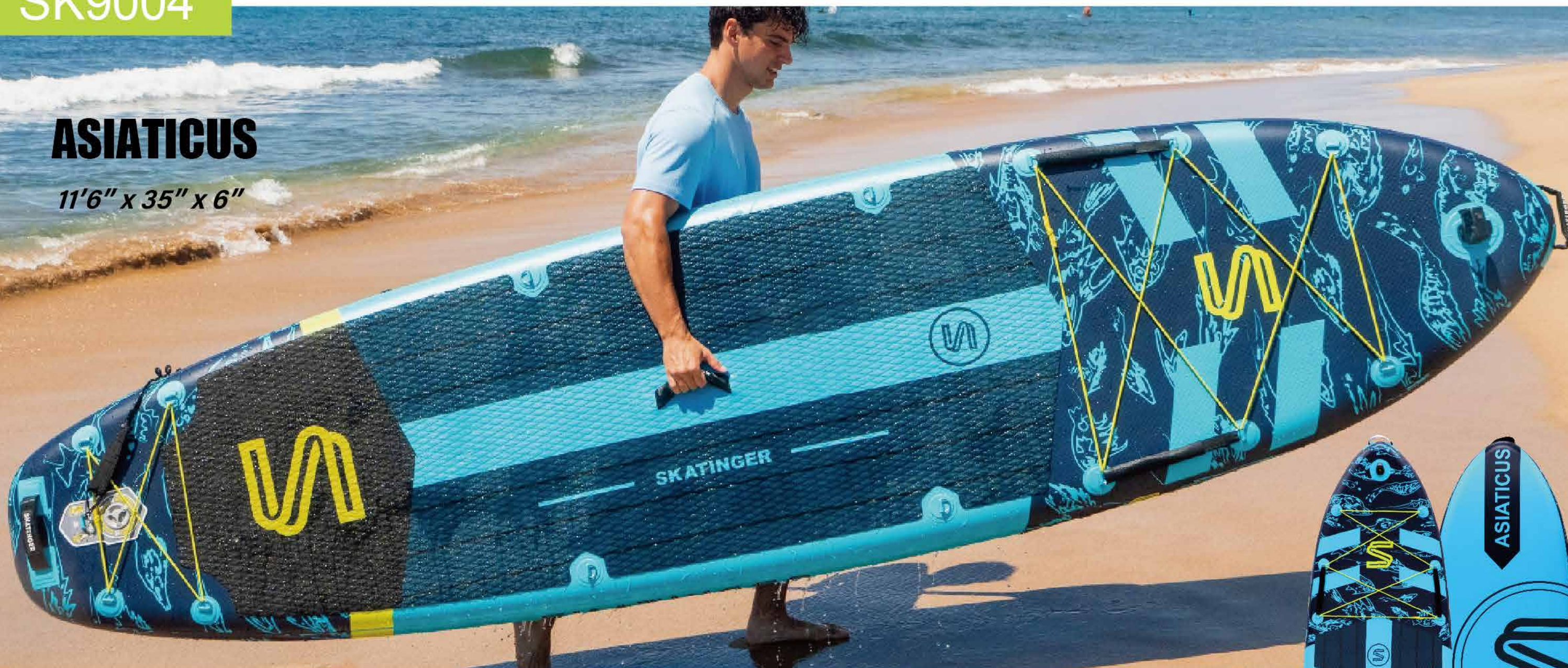
Skatinger paddle board embodies agility, ferocity, and a calm attitude. The design of the front/rear handle is convenient when lifting and dragging from water. The structure of fins + bolts makes the fins firmly fixed on the metal base and will not spread out in the water. Removable fins help you maneuver and steer more easily, allowing you to glide across the water like a fish for fun and adventure in the water!



SK9004

ASIATICUS

11'6" x 35" x 6"



- Backpack /
- Double Action Hand Pump /
- Fins system /
- Leash /
- Repair Kit /
- Shoulder strap /
- Phone Waterproof Bag /
- Waterproof bag /
- User manual /
- Alu paddle /

ACCESSORIES



LENGTH	11'6"
WIDTH	35"
THICKNESS	6"
MODEL	Yoga
CONSTRUCTION	Single-layer
NET WEIGHT	9.8 KG
REC USER WEIGHT	Up to 195 KG
VOLUME	430 L
RECOMMENDED PSI	12-15 PSI



SPORTS

Non-slip EVA deck pad of the Skatinger inflatable paddle board is designed with a diamond pattern and can be inflated to a rock-solid hardness(13~15psi), allowing you to stand comfortably without fear. High-quality military-grade ultra-light PVC material and advanced needle-drop core tech ensure that the inflatable boards have higher compression resistance and elasticity, minimizing accidental injuries, and making the ISUP extremely durable.



SK1101

SPORTS

11'6" x 35" x 6"



Backpack /
Double Action Hand Pump /
Fins system /
Leash /
Repair Kit /
Shoulder strap /
Phone Waterproof Bag /
Waterproof bag /
User manual /
Alu paddle /

ACCESSORIES



LENGTH	11'6"
WIDTH	35"
THICKNESS	6"
MODEL	Yoga
CONSTRUCTION	Single-layer
NET WEIGHT	9.8 KG
REC USER WEIGHT	Up to 195 KG
VOLUME	430 L
RECOMMENDED PSI	12-15 PSI



SeaRider

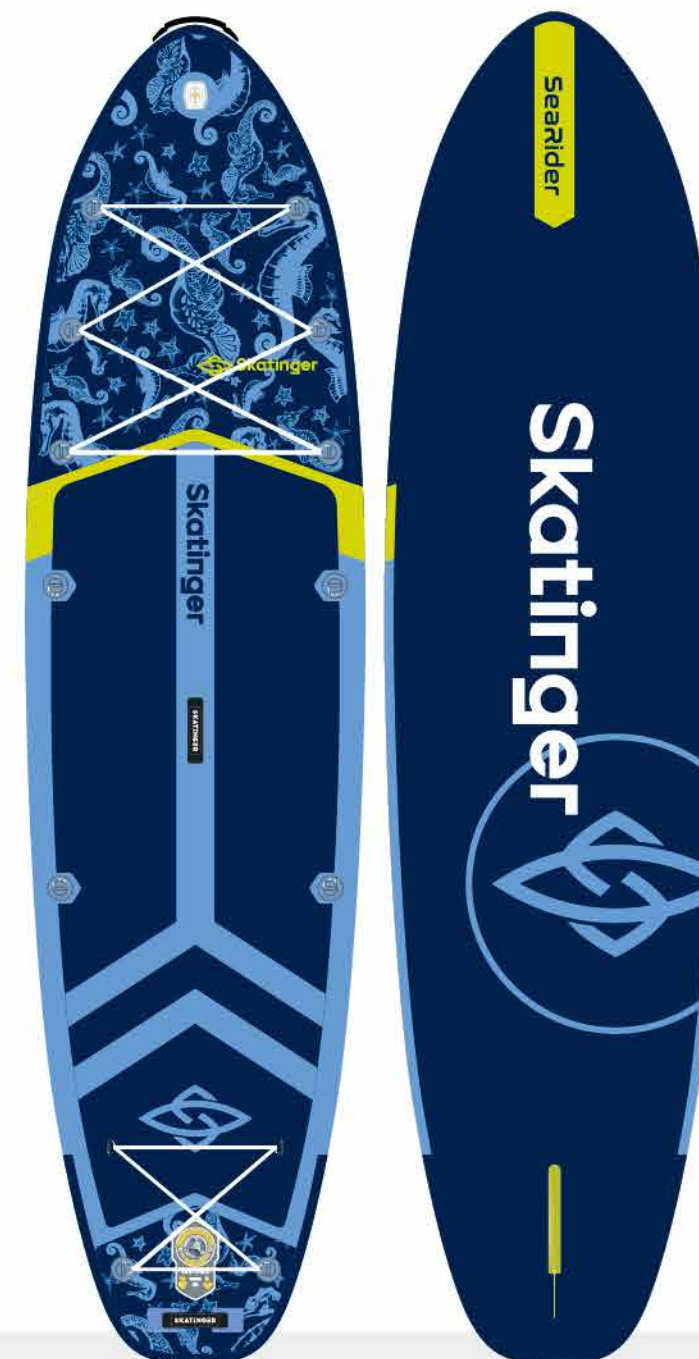
SPORTS DERIVED FROM HAWAII, SIMPLE,
EASY TO USE, SAFERELIABLE, AND TRUSTWORTHY



SK9005



LENGTH	11'6"
WIDTH	35"
THICKNESS	6"
MODEL	Yoga
CONSTRUCTION	Single-layer
NET WEIGHT	9.8 KG
REC USER WEIGHT	Up to 195 KG
VOLUME	430 L
RECOMMENDED PSI	12-15 PSI



SeaRider

11'6" x 35" x 6"



ACCESSORIES

Backpack /
Double Action Hand Pump /
Fins system /
Leash /
Repair Kit /
Shoulder strap /
Phone Waterproof Bag /
Waterproof bag /
User manual /
Alu paddle /



Voyager

THE VOYAGER' IS INSPIRED BY THE HARMONIOUS COEXISTENCE WITH NATURE. WITH SPRING, SUMMER, AUTUMN, AND WINTER AS THE PROTOTYPE, COMBINED WITH THE COLORS OF DIFFERENT SEASONS TO MATCH. SKATINGER ACCOMPANIES YOU TO TRAVEL FAR IN ALL SEASONS.



WH109-113



Voyager

10'6" x 32" x 6"

LENGTH	10'6"
WIDTH	32"
THICKNESS	6"
MODEL	All Around
CONSTRUCTION	Single-layer
NET WEIGHT	8.04 KG
REC USER WEIGHT	Up to 155 KG
VOLUME	342 L
RECOMMENDED PSI	12-15 PSI



Grass Green

WH111

Lake Blue

WH110



ACCESSORIES

Backpack /
Double Action Hand Pump /
Fins system /
Leash /
Repair Kit /
Alu paddle /
Phone Waterproof Bag /



Simple Blue

MAKING NEW DISCOVERIES AND EXPERIENCING
ADVENTURES HAS NEVER BEEN MORE EXCITING
WITH OUR SKATINGER BOARDS!



WH114



Simple Blue

10'6" x 32" x 6"

LENGTH	10'6"
WIDTH	32"
THICKNESS	6"
MODEL	All Around
CONSTRUCTION	Single-layer
NET WEIGHT	8.04 KG
REC USER WEIGHT	Up to 120 KG
VOLUME	342 L
RECOMMENDED PSI	12-15 PSI



ACCESSORIES

- Backpack /
- Double Action Hand Pump /
- Fins system /
- Leash /
- Repair Kit /
- Phone Waterproof Bag /
- Alu paddle /





Plan S

THE SKATINGER PLAN S IS READY AND ABOUT TO START. PLEASE ARRIVE AT THE TARGET LOCATION, LOG IN TO THE BEACH, AND PREPARE FOR THE BATTLE. IF YOU RECEIVE IT, PLEASE ANSWER. IF YOU RECEIVE IT, PLEASE ANSWER."

SK5016-5017



Plan S

11' x 33" x 6"

LENGTH	11'
WIDTH	33"
THICKNESS	6"
MODEL	Touring
CONSTRUCTION	Single-layer
NET WEIGHT	8.60 KG
REC USER WEIGHT	Up to 155 KG
VOLUME	375 L
RECOMMENDED PSI	12-15 PSI



Plans Green

SK5016

Plans Blue

SK5017



ACCESSORIES

- Backpack /
- Double Action Hand Pump /
- Fins system /
- Leash /
- Repair Kit /
- Alu paddle /
- Phone Waterproof Bag /



Cruiser

SPORTS DERIVED FROM HAWAII, SIMPLE,
EASY TO USE, SAFERE LIABLE, AND TRUST WORTHY



SK5001

LENGTH	11'
WIDTH	33"
THICKNESS	6"
MODEL	Touring
CONSTRUCTION	Single-layer
NET WEIGHT	8.50 KG
REC USER WEIGHT	Up to 155 KG
VOLUME	375 L
RECOMMENDED PSI	12-15 PSI

Cruiser

11' x 33" x 6"



ACCESSORIES

Backpack /
Double Action Hand Pump /
Fins system /
Leash /
Repair Kit /
Alu paddle /
Phone Waterproof Bag /



Summer

WITH COLORFUL VISUAL IMPACT AND PLAYFUL
FRUIT ELEMENTS, CLOSE YOUR EYES AND
QUIETLY FEEL THE LEISURELY SUMMER TIME.





LENGTH	11'
WIDTH	33"
THICKNESS	6"
MODEL	Touring
CONSTRUCTION	Single-layer
NET WEIGHT	8.56 KG
REC USER WEIGHT	Up to 155 KG
VOLUME	375 L
RECOMMENDED PSI	12-15 PSI

Summer
11' x 33" x 6"



Durian
SK5005

Watermelon
SK5006



- Backpack /
- Double Action Hand Pump /
- Fins system /
- Leash /
- Repair Kit /
- Phone Waterproof Bag /
- Alu paddle /

ACCESSORIES



Aurora

AURORA IS A NATURAL ASTRONOMICAL
SPECTACLE. IT HAS NO FIXED SHAPE AND
DIFFERENT COLORS. IT IS GRACEFUL
AND MYSTERIOUS





Aurora

11' x 33" x 6"

LENGTH	11'
WIDTH	33"
THICKNESS	6"
MODEL	Touring
CONSTRUCTION	Double layers
NET WEIGHT	9.64 KG
REC USER WEIGHT	Up to 155 KG
VOLUME	375 L
RECOMMENDED PSI	12-15 PSI



Aurora Red
SK5008

Aurora Black
SK5010



- Backpack /
- Double Action Hand Pump /
- Fins system /
- Leash /
- Repair Kit /
- Phone Waterproof Bag /
- Alu paddle /

ACCESSORIES



Dream Journey

RECOGNIZE THAT A DREAM IS A JOURNEY





Dream Journey

11' x 33" x 6"

LENGTH	11'
WIDTH	33"
THICKNESS	6"
MODEL	Touring
CONSTRUCTION	Single-layer
NET WEIGHT	8.56 KG
REC USER WEIGHT	Up to 155 KG
VOLUME	375 L
RECOMMENDED PSI	12-15 PSI



- Backpack /
- Double Action Hand Pump /
- Fins system /
- Leash /
- Repair Kit /
- Phone Waterproof Bag /
- Alu paddle /

ACCESSORIES



Rapunzel
SK5011

Flynn
SK5012

Pascal
SK5013





Sunrise and Sunset

SPORTS DERIVED FROM HAWAII, SIMPLE,
EASY TO USE, SAFERE LIABLE, AND TRUST WORTHY



Sunrise and Sunset

11' x 33" x 6"

LENGTH	11'
WIDTH	33"
THICKNESS	6"
MODEL	Touring
CONSTRUCTION	Single-layer
NET WEIGHT	8.56 KG
REC USER WEIGHT	Up to 155 KG
VOLUME	375 L
RECOMMENDED PSI	12-15 PSI



Sunrise
SK5014

Sunset
SK5015



- Backpack /
- Double Action Hand Pump /
- Fins system /
- Leash /
- Repair Kit /
- Phone Waterproof Bag /
- Alu paddle /

ACCESSORIES





Witch

NAMED AFTER THE WITCH IN ANCIENT GREEK MYTHOLOGY, THE DESIGN INCORPORATES ANCIENT WESTERN ELEMENTS IN A GORGEOUS AND VISUALLY STRIKING, WITH A GLANCE THAT LASTS FOREVER.

Circe

WH206



Goblin

WH205



Sylva

WH203



Undine

WH201

Witch

11'6" x 32" x 6"



LENGTH 11'6"

WIDTH 32"

THICKNESS 6"

MODEL Touring

CONSTRUCTION Single-layer

NET WEIGHT 8.6 KG

REC USER WEIGHT Up to 160 KG

VOLUME 375 L

RECOMMENDED PSI 12-15 PSI

ACCESSORIES

Backpack /
Double Action Hand Pump /
Fins system /
Leash /
Repair Kit /
Phone Waterproof Bag /
Alu paddle /



Graffiti

GRAFFITI IS THE STATIC EXPRESSION OF STREET CULTURE. IT IS THE MOST DIRECT INNER VOICE, WITH BRIGHT COLORS, SONOROUS VOICE AND PUBLICIZED PERSONALITY. IT IS THE SYMBOL OF A YOUNG CITY, PASSIONATE AND RESTLESS, RESTLESS AND REBELLIOUS. YOU CAN DISAGREE WITH IT, BUT YOU CAN'T IGNORE IT.





Graffiti

11'6" x 32" x 6"

LENGTH	11'6"
WIDTH	32"
THICKNESS	6"
MODEL	Touring
CONSTRUCTION	Single-layer
NET WEIGHT	8.16 KG
REC USER WEIGHT	Up to 160 KG
VOLUME	375 L
RECOMMENDED PSI	12-15 PSI



Graffiti yellow

WH218

Graffiti red

WH219



Backpack /
Double Action Hand Pump /
Fins system /
Leash /
Repair Kit /
Phone Waterproof Bag /
Alu paddle /

ACCESSORIES





Chance

DEEP,MYSTERIOUS AND DREAMY COLORS, SYM-
BOLIZINGU TO PIAN DREAMS



Chance
11'6" x 32" x 6"

LENGTH	11'6"
WIDTH	32"
THICKNESS	6"
MODEL	Touring
CONSTRUCTION	Double layers
NET WEIGHT	9.4 KG
REC USER WEIGHT	Up to 160 KG
VOLUME	375 L
RECOMMENDED PSI	12-15 PSI



Chance red
WH220

Chance blue
WH221



A C C E S S O R I E S

- Backpack /
- Double Action Hand Pump /
- Fins system /
- Leash /
- Repair Kit /
- Phone Waterproof Bag /
- Alu paddle /





Tiger and Bear

MAKING NEW DISCOVERIES AND EXPERIENCING
ADVENTURES HAS NEVER BEEN MORE EXCITING
WITH OUR SKATINGER BOARDS!





Tiger and Bear

11'6" x 32" x 6"

LENGTH	11'6"
WIDTH	32"
THICKNESS	6"
MODEL	Touring
CONSTRUCTION	Single-layer
NET WEIGHT	8.5 KG
REC USER WEIGHT	Up to 160 KG
VOLUME	375 L
RECOMMENDED PSI	12-15 PSI

ACCESSORIES

- Backpack /
- Double Action Hand Pump /
- Fins system /
- Leash /
- Repair Kit /
- Phone Waterproof Bag /
- Alu paddle /



Bear
WH225

Tiger
WH226



Interstellar

MAKING NEW DISCOVERIES AND EXPERIENCING
ADVENTURES HAS NEVER BEEN MORE EXCITING WITH
OUR SKATINGER BOARDS!





Interstellar

11'6" x 32" x 6"

LENGTH	11'6"
WIDTH	32"
THICKNESS	6"
MODEL	Touring
CONSTRUCTION	Single-layer
NET WEIGHT	8.6 KG
REC USER WEIGHT	Up to 160 KG
VOLUME	375 L
RECOMMENDED PSI	12-15 PSI

- Backpack /
- Double Action Hand Pump /
- Fins system /
- Leash /
- Repair Kit /
- Phone Waterproof Bag /
- Alu paddle /

ACCESSORIES



Interstellar Blue
WH222



Interstellar Black
WH223



Interstellar Red
WH224



Octopus

SPORTS DERIVED FROM HAWAII, SIMPLE,
EASY TO USE, SAFERE LIABLE, AND TRUST WORTHY



SK3005

LENGTH	11'
WIDTH	34"
THICKNESS	6"
MODEL	Yoga
CONSTRUCTION	Single-layer
NET WEIGHT	9.02 KG
REC USER WEIGHT	Up to 170 KG
VOLUME	420 L
RECOMMENDED PSI	12-15 PSI



Octopus

11' x 34" x 6"



Backpack /
Double Action Hand Pump /
Fins system /
Leash /
Repair Kit /
Shoulder strap /
Phone Waterproof Bag /
Waterproof bag /
User manual /
Alu paddle /

ACCESSORIES



Crazy Tribe

SPORTS DERIVED FROM HAWAII, SIMPLE,
EASY TO USE, SAFERE LIABLE, AND TRUST WORTHY



SK3006

LENGTH	11'
WIDTH	34"
THICKNESS	6"
MODEL	Yoga
CONSTRUCTION	Single-layer
NET WEIGHT	9.52 KG
REC USER WEIGHT	Up to 160 KG
VOLUME	420 L
RECOMMENDED PSI	12-15 PSI

Crazy Tribe

11' x 34" x 6"



ACCESSORIES

Backpack /
Double Action Hand Pump /
Fins system /
Leash /
Repair Kit /
Phone Waterproof Bag /
Alu paddle /



Cmyk

DEEP, MYSTERIOUS AND DREAMY COLORS, SYMBOLIZING UTOPIAN DREAMS





Cmyk

12'6" x 30" x 6"

LENGTH	12'6"
WIDTH	30"
THICKNESS	6"
MODEL	Racing
CONSTRUCTION	Double layers
NET WEIGHT	9.8 KG
REC USER WEIGHT	Up to 130 KG
VOLUME	330 L
RECOMMENDED PSI	12-15 PSI

Backpack /
Double Action Hand Pump /
Fins system /
Leash /
Repair Kit /
Phone Waterproof Bag /
Alu paddle /

ACCESSORIES



Cmyk Pink

JS1001



Cmyk Orange

JS1002



Milano

ENJOY THE PLEASURE OF RACING.
SHOW YOUR STYLE.
GO AHEAD AND MAKE A DIFFERENCE



JS2001

LENGTH	14'
WIDTH	27"
THICKNESS	6"
MODEL	Racing
CONSTRUCTION	Woven Double layers
NET WEIGHT	11 KG
REC USER WEIGHT	Up to 130 KG
VOLUME	375 L
RECOMMENDED PSI	12-15 PSI



Milano

14' x 27" x 6"



ACCESSORIES

Backpack /
Double Action Hand Pump /
Fins system /
Leash /
Repair Kit /
Phone Waterproof Bag /
Alu paddle /



i-Rocker

WINDSURFING IS A GROUND BREAKING WATER SPORT. WIND SURFERS USE THE WIND TO PROPEL THEMSELVES FORWARD, FLYING ACROSS THE WATER WITH A BOARD UNDER THEIR FEET. IT TAKES YOU IN THE CLOSEST CONTACT WITH NATURE AND BRINGS YOU TO UNDERSTAND THE WIND. WHAT DO YOU THINK, DO YOU DARE?



SK5002



i-Rocker

11' x 33" x 6"

LENGTH	11'
WIDTH	33"
THICKNESS	6"
MODEL	Sailboard
CONSTRUCTION	Double layers
NET WEIGHT	10.1 KG
REC USER WEIGHT	Up to 155 KG
VOLUME	375 L
RECOMMENDED PSI	12-15 PSI

Sail board/
Sail bag/
Sail Accessories/
Sailor's fin/
Backpack /
Double Action Hand Pump /
Fins system /
Leash /
Repair Kit /
Phone Waterproof Bag /
Alu paddle /

ACCESSORIES





Kayak

SPORTS DERIVED FROM HAWAII SIMPLE, EASY TO
USE, SAFE, RELIABLE, AND TRUST WORTHY



Kayak

410cm-485cm

MODEL	Kayak
CONSTRUCTION	Single-layer
GROSS WEIGHT	410cm 28.5 KG 485cm 33.3KG
REC USER WEIGHT	Up to 170 KG
VOLUME	350 L
RECOMMENDED PSI	6-8 PSI

Kayak 410cm



Kayak 485cm



ACCESSORIES

- Pin Fins /
- Pedal /
- Inflator /
- Patch kit /
- Baffle /
- Bouble-ended Paddle /
- Wheeled Backpack /
- Kayak Seats



Optional Accessories



life jacket



Waterproof bag



Kayak Seat

Carbon paddle



Electric pump



Hollow hat



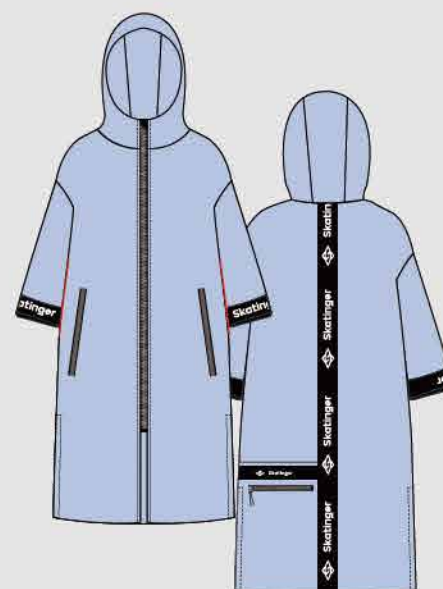
Shoulder strap



Sun protection clothing



Full top hat



Beach cape



Men's Quick-drying tight



Women's Quick-drying tight



Singlet



POWER FIN (MOTOR)

Motor Power	240W (DC 24V)	Operating Speed	5-7.8 km/h
Runtime	35-55 minutes	Material	PC+ABS
Waterproof	IP68	Weight	1.5kg (3.3 Lbs)
Dimension	284 x 122 x 99mm (11" x 4.8" x 3.9")		



PUSH ENTER APPARATUS

Power	600W	Type of motor	DC Brushless Motor
Nominal voltage	24V	Standard Cable Length	1.2 m
Thrust thrust	30 pounds	Weight	1.6 KG
Adaptation to water environment		Freshwater/sea water	



BATTERY PACK

Battery Life	> 300 cycles	Material	flame retardant PC
Waterproof	IP67	Net Weight	0.8kg (1.76 Lbs)
Rechargeable Battery Pack	DC 22.2V 4400mAh/97.68Wh	Dimension	155 x 60 x 50mm (6.1" x 2.4" x 2")

*Special lithium-ion battery for Power Fin



replaceable

BATTERY BOX

With circuit board and a 2-in-1 magnetic switch
(working as both power switch and emergency stop switch)

Material	flame retardant PC+ABS	Waterproof	IP67
Dimension	218 x 155 x 85mm (8.6" x 6.1" x 3.3")	Net Weight	0.56kg (1.23 Lbs)



ELECTRICITY POOL

Capacity	30000mAh
Nominal voltage	22.42V
Battery weight	5.5 KG (The actual shall prevail)
Charging ambient temperature	5-40℃
Energy	666WH
Waterproof grade	IP67
Storage temperature	0-45℃
Maximum charging power	150W

Battery lifetime

drive at 1 gear - 3 km/hour (battery can last 10 hours)
drive at 2 gear - 6 km/hour(battery can last 4 hours)
drive at 3 gear - 8 km/hour(battery can last 2.5 hours)
drive at 4 gear - 9 km/hour(battery can last 1.5 hours)

